

# MS Crinkle Finish

Performance you can see and feel

**MS metal sales**<sup>™</sup>  
manufacturing corporation

metalsales.us.com

## Unique Textured Finish for Superior Performance

This new, textured finish redirects light for enhanced visual depth, resulting in a series of shifting and shimmering tones. MS Crinkle Finish promises a unique, aesthetic appearance compared to a standard finish.

Formulated with enhanced silicone polyester, MS Crinkle Finish offers enhanced weatherability to resist fading, scratching and chalking. Combine that with the superior sales and technical support you have come to expect from Metal Sales and you have a building envelope that will last for decades and decades.

## Features & Benefits

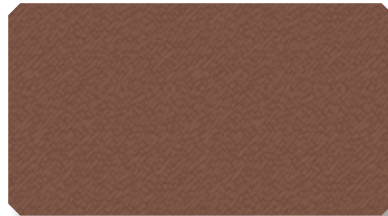
- Panel Gauge: 29 ga.
- Siliconized Polyester paint system
- Warranty: 45 year film integrity
- Exceptional mar resistance
- Available in your choice of 6 popular colors
- Meets ENERGY STAR<sup>®</sup> requirements
- MS Crinkle Finish trims available



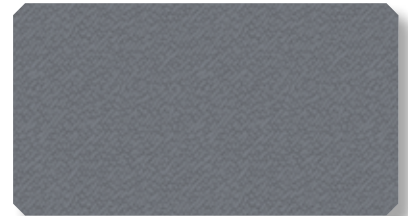
Red (24)



Forest Green (26)



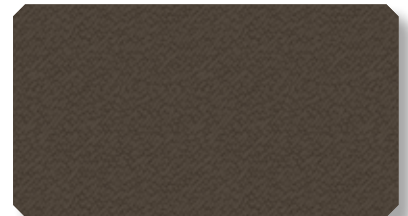
Brown (12)



Charcoal (17)



Burgundy (15)



Burnished Slate (49)



Note: Colors shown above are close representations but are limited by printing and viewing conditions. This is a unique appearance coating that needs to be seen and felt. Actual samples are available by request. Contact a Metal Sales representative for more information about our full line of panel profiles, trims and accessories to complete your project from start to finish.

**MS metal sales**<sup>™</sup>  
manufacturing corporation

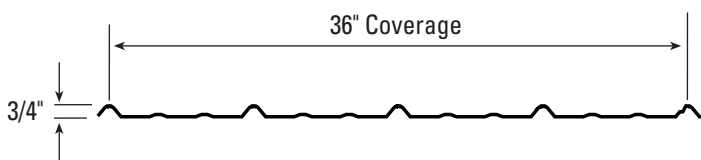
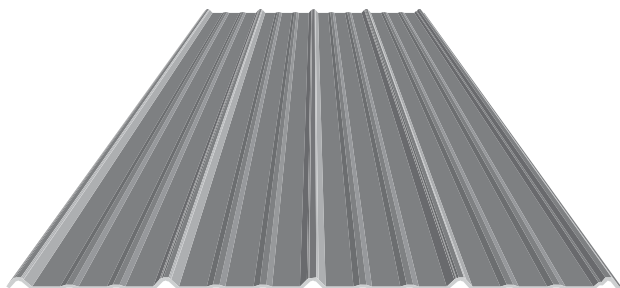
metalsales.us.com



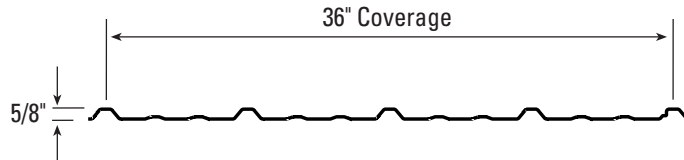
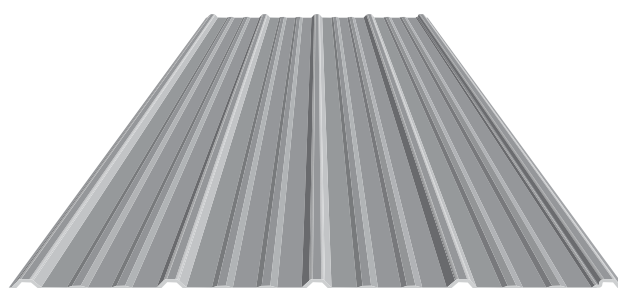
Printed in the U.S.A. ©MS / 7-17

## PANEL PROFILES

Classic Rib®



Pro-Panel II®



Other panel profiles are available. Please contact your local branch for more information.

### ADVANTAGES OF METAL ROOF AND WALL PANELS

ENERGY STAR "Cool" Colors provide up to 40% annual energy savings • 100% Recyclable Steel  
Hail Impact Resistant • Virtually Maintenance-Free • Class A Fire-Resistance Rating\*

\*For non-combustible assemblies

## MS CRINKLE FINISH PAINT SYSTEM INFORMATION

### Multiple Layers of Protection

